

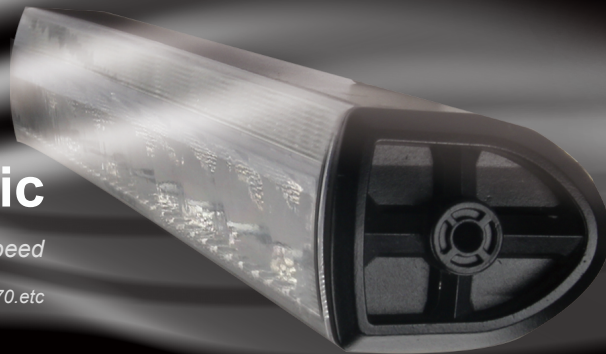
Driving beam

High efficiency reflector technology
 High power LEDs built-in
 Long-range illumination
 Nodark comer nearby

Aerodynamic

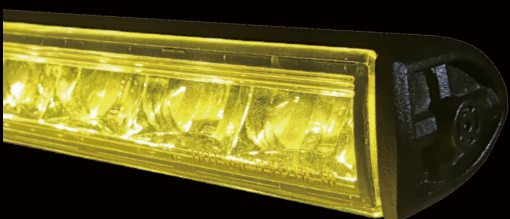
Zero noise at high speed

Available with E8303.E8307.E8309.E2170.etc



Dual Bracket

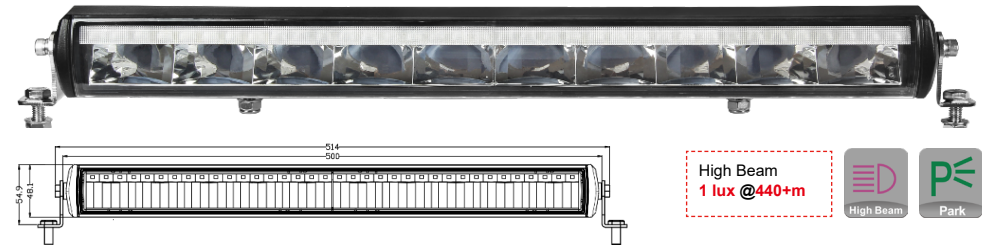
Side mount and back mount provided
 Slot hole design of back bracket
 Optimized mounting solution for both
 OEM and after-market purposes
 Mainly for E8307 light bar serie



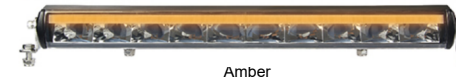
Yellow Beam

yellow light optional for improed
 illumination and visibility against dusty
 rainy and foggy environment
 Available with E8303,E8307,E8309,series

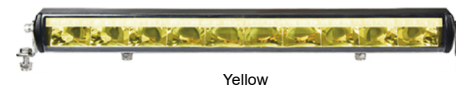
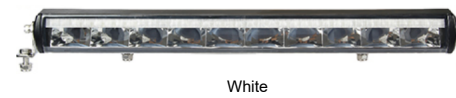
20" Aerodynamic Driving Light Bar – New design



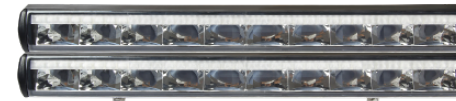
Color options for Position



Color options for High Beam



2 rows could be fixed together



Dual High Beam + Position

Model:	E8307
Functions, Homologation	
Functions:	High Beam, Position
Homologation:	ECE R112, R7, R10
Optical & Electric Features	
LED Type:	High Beam: 8 pcs 15W LEDs +2 pcs 10W LEDs Position: 32pcs 0.5W LEDs
Emitting Color:	White
Color Temp:	5700K-6500k (White) 11700LM
Raw Lumen:	4230LM
Effective Lumen:	4230LM
Energy Consumption:	High Beam 58W; (White) Position 1.5W
Current Draw @ 12V:	High Beam: 4.8A; Position: 0.125A
Illumination:	High Beam: 1 lux @445m
Electromagnetic Features	
EMC Grade:	CISPR 25 Class 3
Operating Voltage:	10V~30V
Connector:	Cable
Mechanical Features	
Size:	500X50.4X83.5mm (back bracket) 514X50.9X77.6mm (side bracket)
Housing Material:	Aluminum
Lens Material:	Anti-UV PC
Lens Processing:	Surface Hardened
PC Brand:	COVESTRO 2407
Bracket:	Stainless Steel
IP Rate:	IP66, IP6K9K
Work Temp:	-40~+50°C
So this is Life	
Life Time:	>30,000h

isolux (High Beam 1 pcs E8307) 1lux@440+M, Max. 286Lux / H.:1.2m, Tilt: 0°

